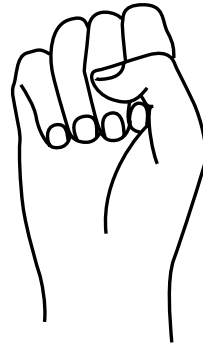
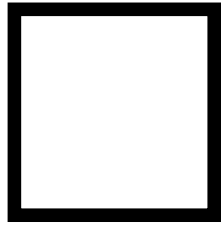
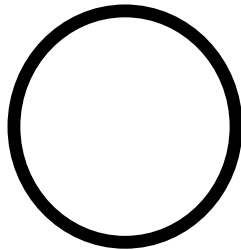


# 1

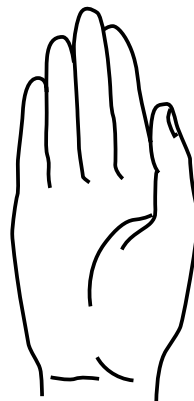
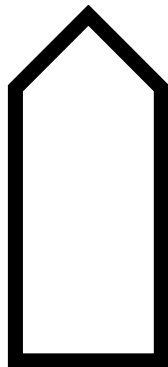
Closed Fist



Open Fist

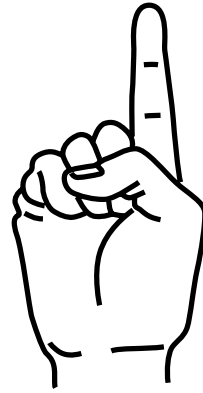
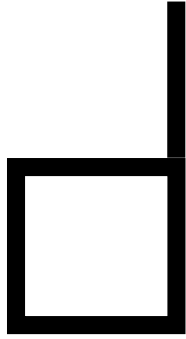


Flat Hand

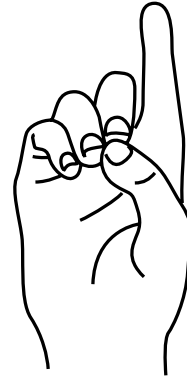
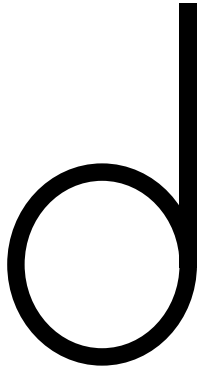


# 2

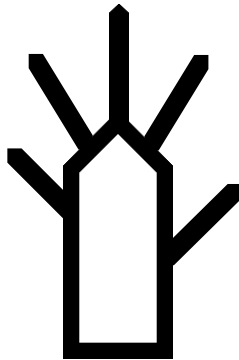
Index Hand



D - Hand

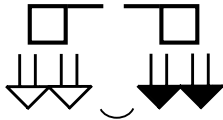
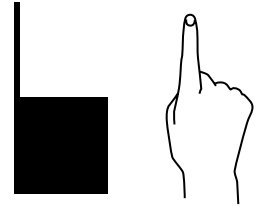
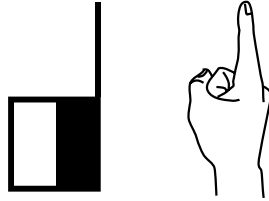
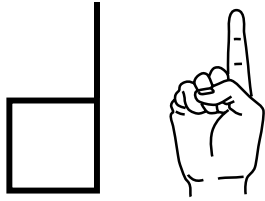


5 - Hand

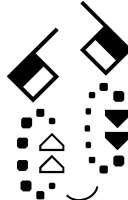


# 3

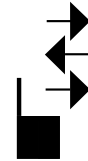
## Front View Hands Parallel With The Wall



argue



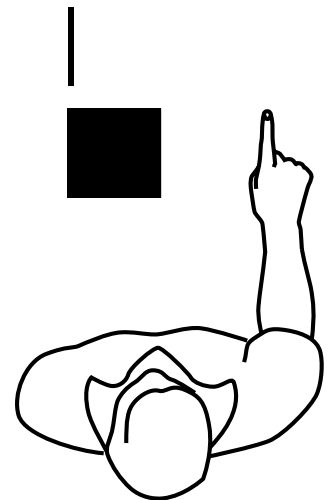
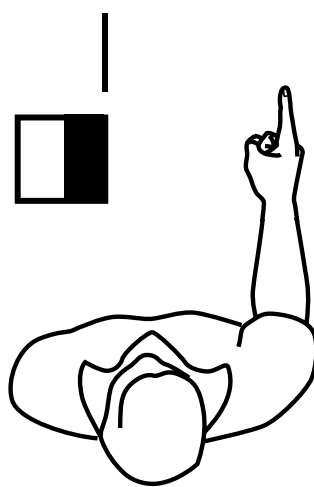
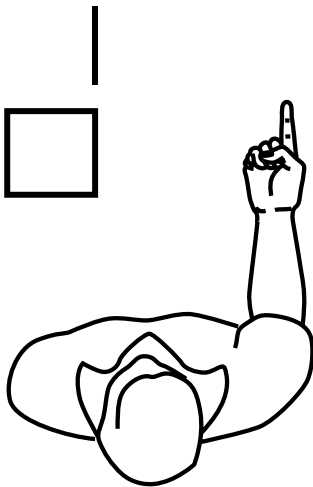
sign



where

---

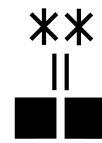
## Top View Hands Parallel With The Floor



happen



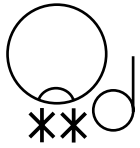
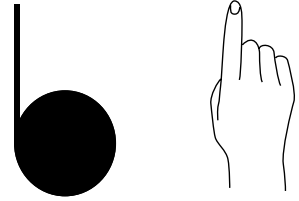
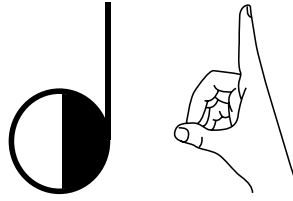
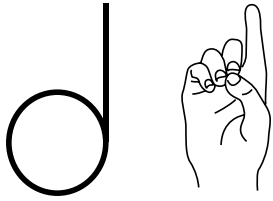
you



same

# 4

## Front View Hands Parallel With The Wall



dinner



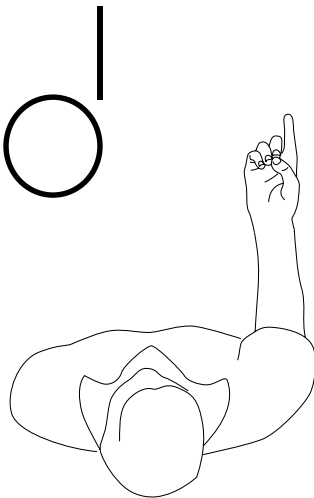
dating



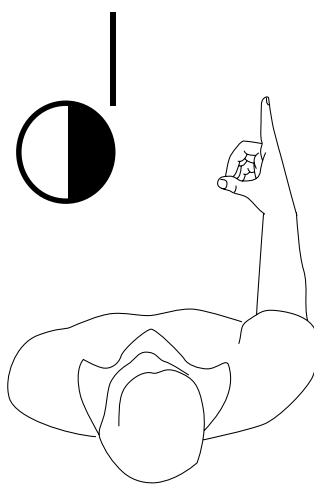
democracy

---

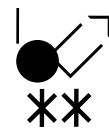
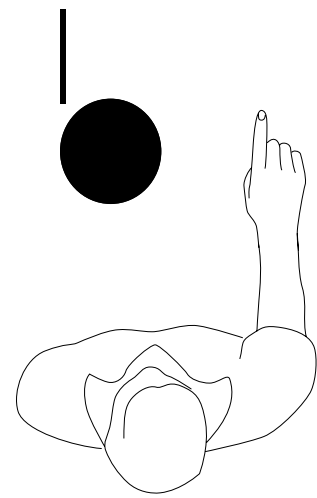
## Top View Hands Parallel With The Floor



do-do?



dessert

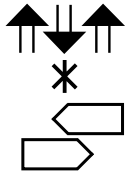
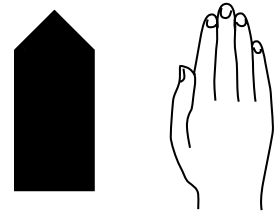
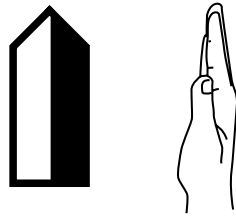
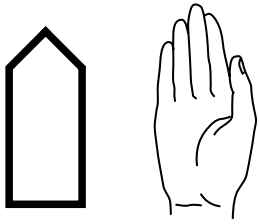


doctor

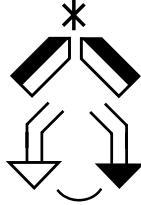
# 5

## Front View

Hands Parallel With The Wall



window



house

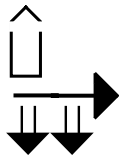
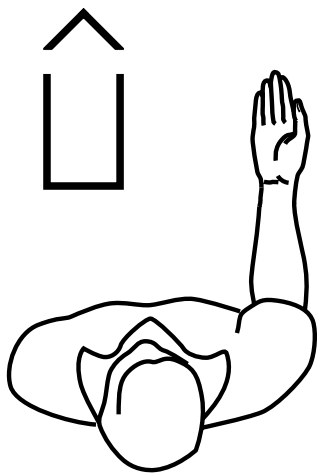


their

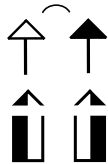
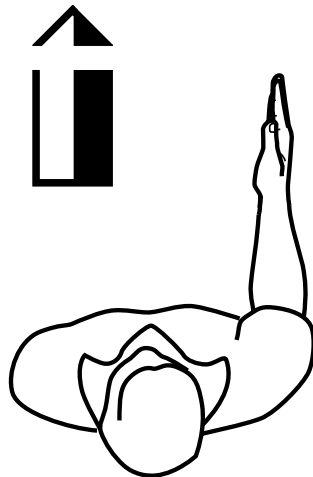
---

## Top View

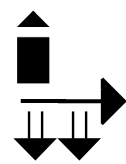
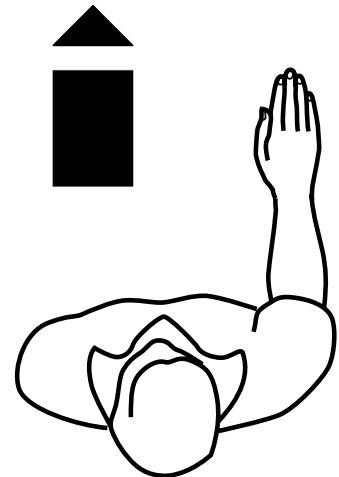
Hands Parallel With The Floor



things



way

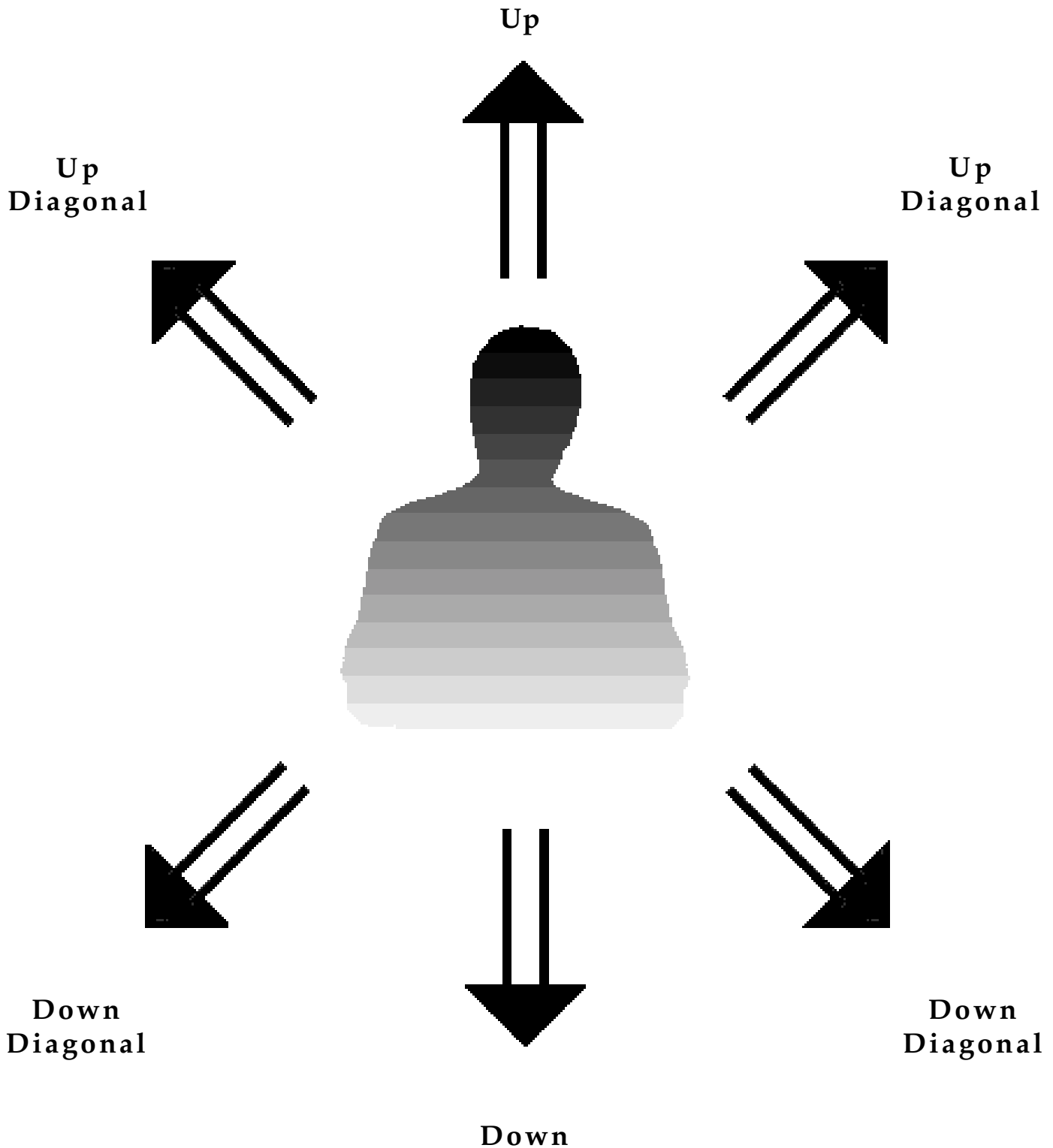


children

## Up-Down Movement

Up-Down movement is parallel with the front wall.

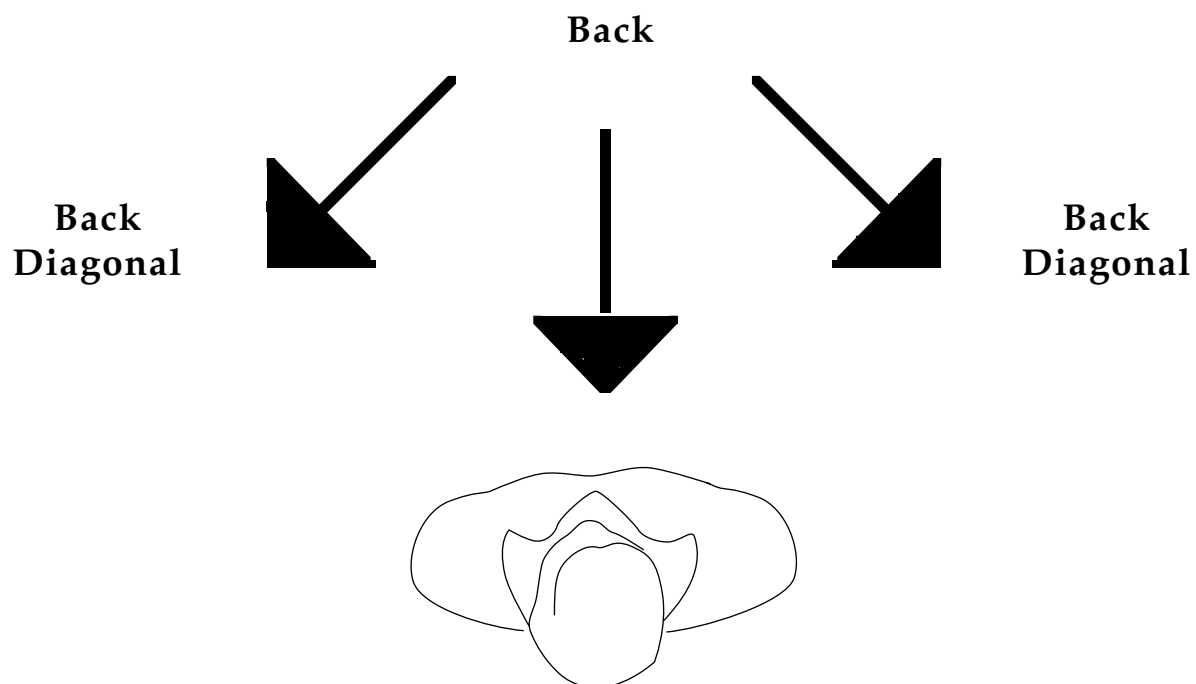
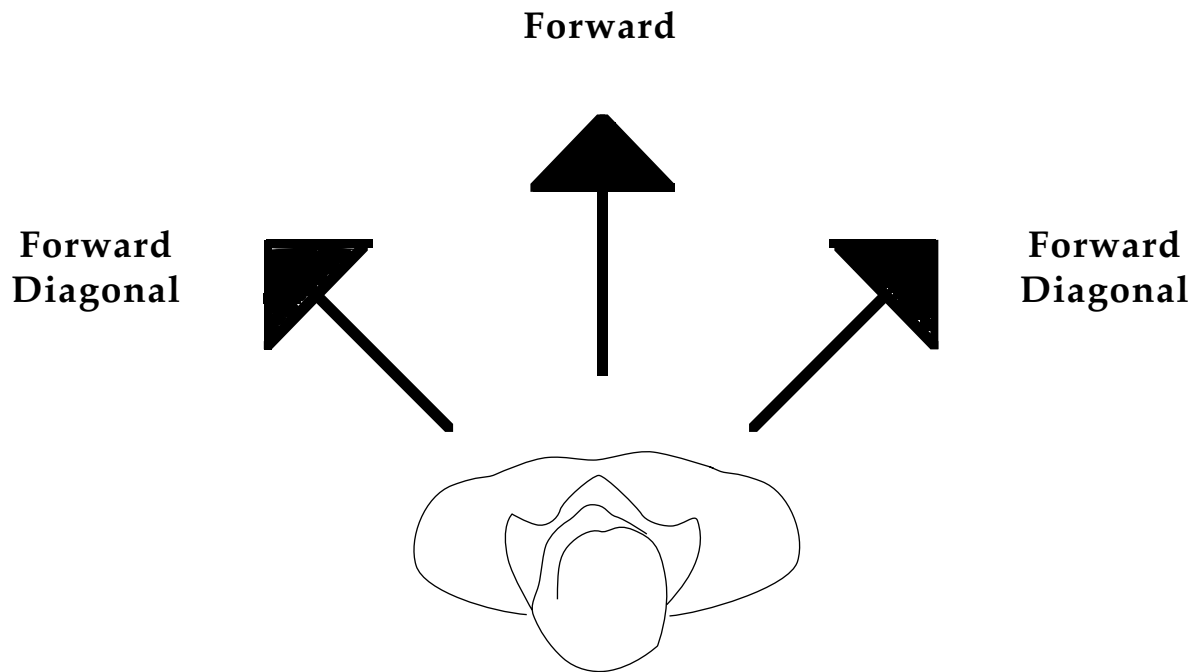
It is written with **double-stemmed** arrows:

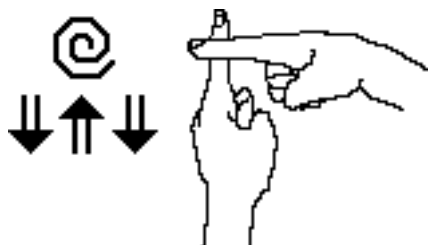


## Forward-Back Movement

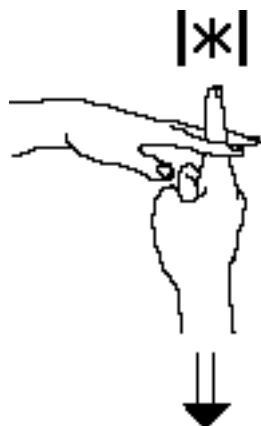
Forward-Back movement is parallel with the floor.

It is written with **single-stemmed** arrows:





temperature



disappear



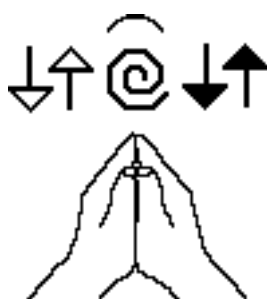
**Straight  
Movement**

## Up or Down

A double-stemmed arrow means that the movement is straight up or down, parallel with the front wall. The movement is flat with the front of your body.



excuse me



eager

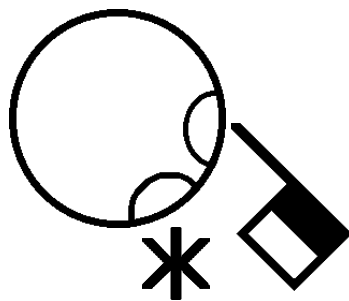
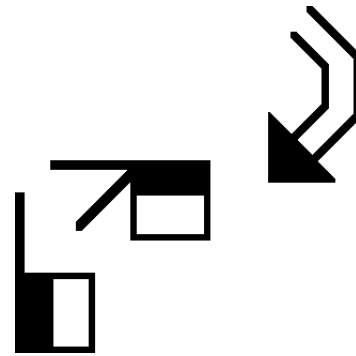
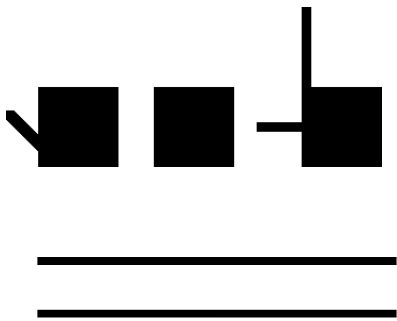
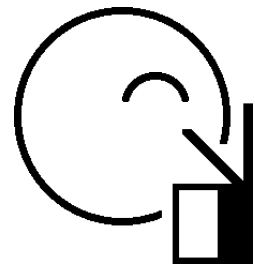
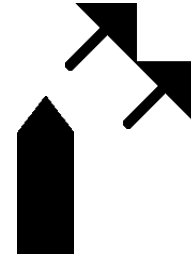
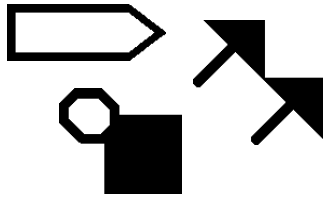
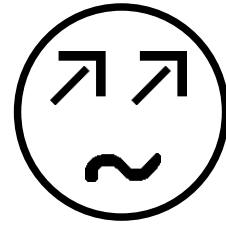
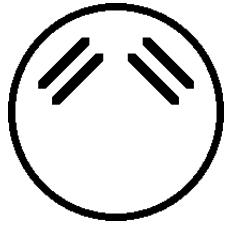


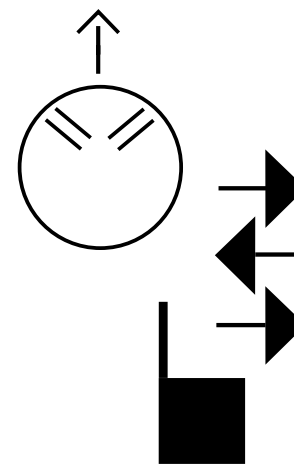
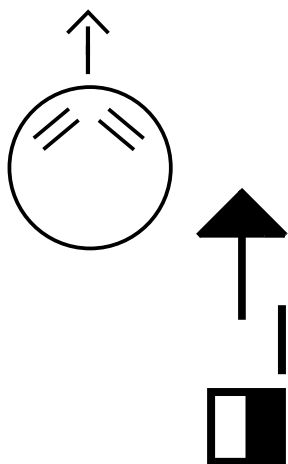
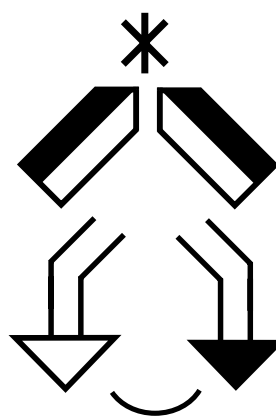
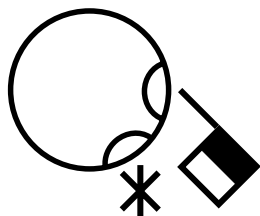
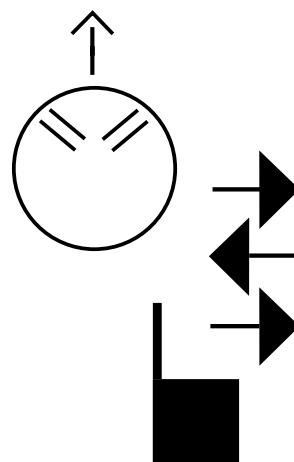
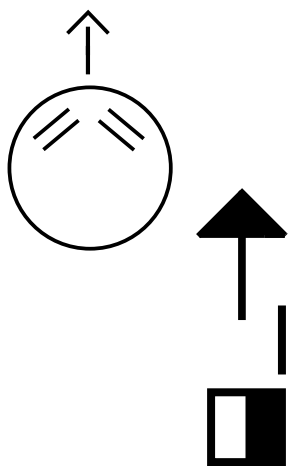
**Straight  
Movement**

## Forward or Back

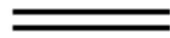
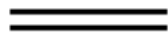
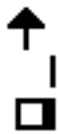
A single-stemmed arrow means that the movement is forward or back, parallel with the floor. You are looking down, on top of the movement.







# 11



# 12

